



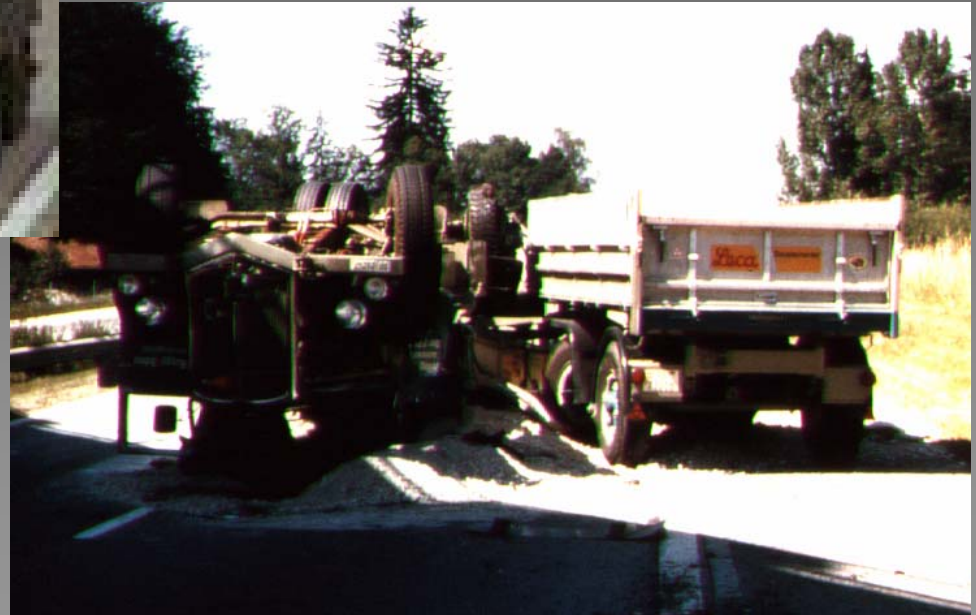
HAENNI Wheel Load Scales Inc. is located in Jegenstorf, Switzerland being part of the Bourdon-Haenni Holding.

HAENNI has been producing portable scales to weigh commercial vehicles since 1974. The World-wide distribution is handled by our own sales offices or through a network of qualified distributors. Most of our products are developed in-house and are manufactured mainly by our own production facilities.

Our very competent technical support together with an outstanding product quality have brought us into a leading position for the mobile weighing market, particularly in the field of weight enforcement.



- Expensive road damage caused by overloaded vehicles
- Accidents
- Unfair competition

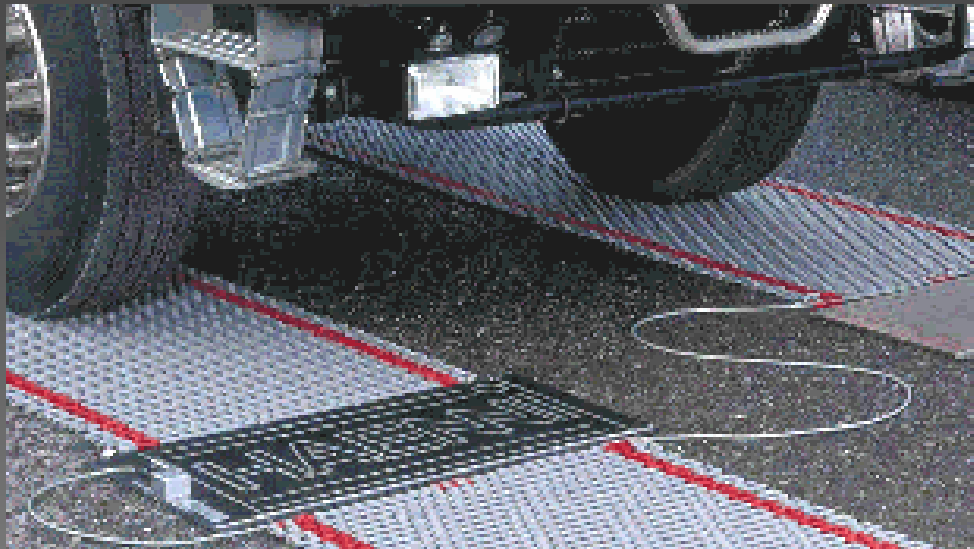


The road network is the backbone of a country's infrastructure and a basis for a prosperous economy. Its construction is very costly and the same must therefore be protected! Overloaded vehicles are destroying the roads. As a consequence, an efficient weight enforcement program is necessary.

With portable Wheel Load Scales, heavy traffic can be monitored any time and anywhere.

The Enforcement location may be changed frequently according to the actual needs. Experience shows, that within a very short period of time all overloaded vehicles are re-routing, as drivers are being made aware of upcoming check points!

Dynamic



Static



Static Wheel Load Scales are officially approved for use by Law Enforcement Agencies.

Dynamic Wheel Load Scales are accepted for screening purposes.
Note: Dynamic Scales are generally not approved for Law Enforcement.

Use of HAENNI Scales in the Industry, Transportation, Agriculture and Forestry



The benefits of HAENNI Wheel Load Scales are:

- Reliability
- Accuracy
- Low profile
- Minimal weight

Professionals are unanimous, HAENNI Scales do the job anywhere - anytime!

Weighing for trade is acceptable provided the vendor and the buyer have a mutual agreement.

What is the accuracy of a weighing?

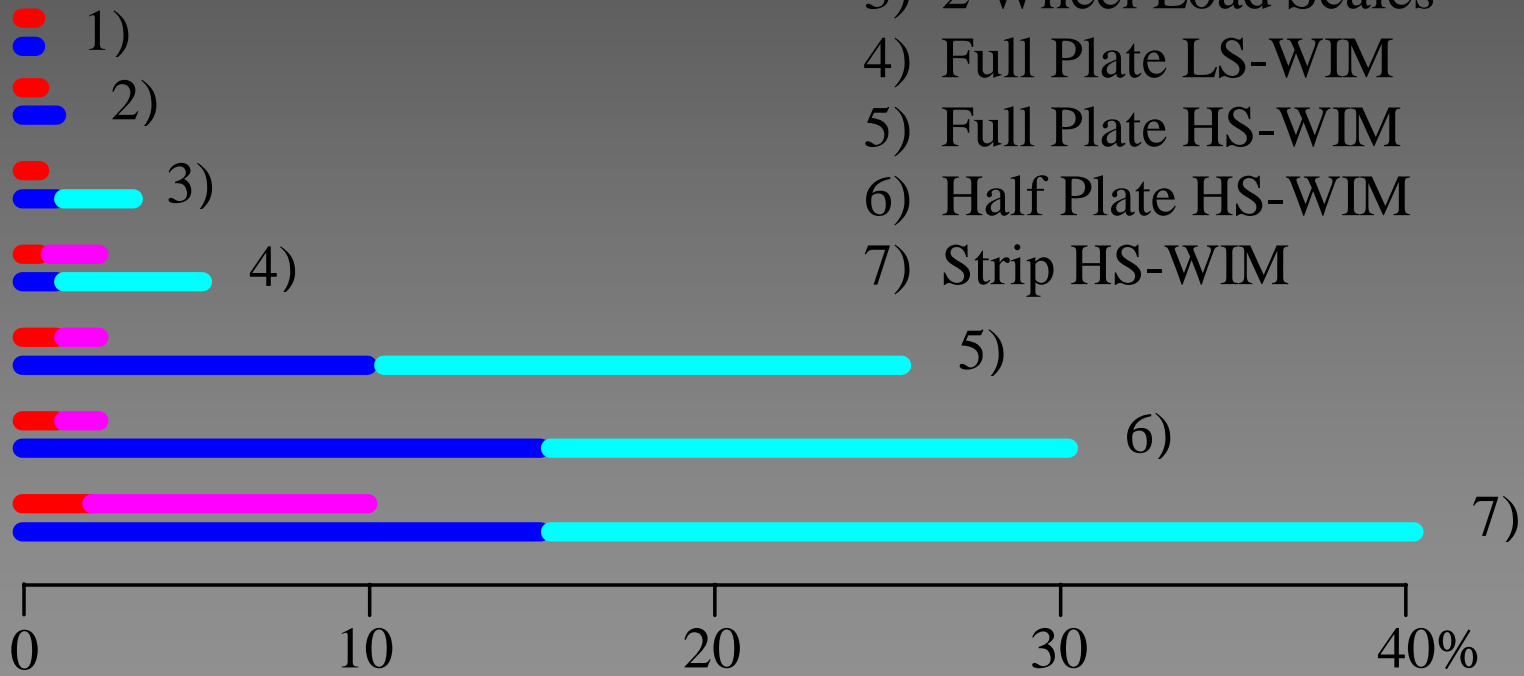
Static Wheel Load Scales: better than 1%.

Dyn. Wheel Load Scales: better than 2%.

Additional errors may occur due to load shift from one axle to another! 1% to 3% (static weighing) respectively 1% to 5% (dynamic weighing up to 5 km/h) depending on the type and quality of the vehicle and the site.

The accuracy of different systems are:

- 1) Platform Scale
- 2) 6 Wheel Load Scales
- 3) 2 Wheel Load Scales
- 4) Full Plate LS-WIM
- 5) Full Plate HS-WIM
- 6) Half Plate HS-WIM
- 7) Strip HS-WIM



Legend: █ █ Intrinsic Error, Minimum/Maximum
█ █ Over All Error, Minimum/Maximum

To date over 20'000 HAENNI Wheel Load Scales have been sold World-wide:

Europe:	5'900
North America:	13'100
South America:	700
Australia:	1'000
Asia:	2'000
Africa:	300

